

Somebody imagines the future.
HT keeps it under control.



PV TESTERS

Instruments for the performance verification, maintenance and safety testing of photovoltaic systems



We build the future since 1983

Somebody
imagines the
future.
HT keeps it
under control.

Systems for the **production of electric energy** through the conversion of **solar radiation** immediately represented a decisive step towards a **virtuous** and **eco-sustainable future**.

A future in constant evolution that needs to be looked after, controlled, managed, guaranteed in an accurate and professional way.

This is why **HT Italia** provides you with the **most suitable** and performing instruments for **managing photovoltaic systems**, from **testing** to **maintenance**, from **checking efficiency** to **quality analyses**, all **WI-FI**, immediately on your devices.

Future can be imagined, HT guarantees it.



NEW



FUNCTION

GFL

Identification and localization of the fault

INSULATION

1500 VDC

For photovoltaic systems

Tests in

DUAL

MODE

Localization of the faulty pole

ORDER CODE **HV0PVISO**

PV-ISO TEST

MULTIFUNCTION INSTRUMENT FOR COMMISSIONING, TESTING THE ELECTRIC SAFETY AND SEARCHING FOR FAULTS

- › Insulation measurement up to 1500VDC
- › Localization of the faulty module through the new GFL function
- › Insulation measuring modes DUAL and TIMER for checking the state of deterioration of the insulation
- › Continuity of protective conductors with 200mA



SEE THE
TECHNICAL
DATA SHEET



WATCH
THE VIDEO
TUTORIAL

WiFi

WIFI
CONNECTION

I-V CURVE
MAX

15A

MAX
1500 V



ORDER CODE **HV00500W**

I-V500w

I-V CURVE TRACING OF MODULES AND STRINGS

- › I-V curve up to 1500V and 10A or up to 1000V and 15A
- › Power measurement of a module or a string
- › Open-circuit voltage (Voc) up to 1500V
- › Short-circuit current (Isc) up to 15A
- › Radiation measurement
- › Environmental and Cell temperature measurement
- › No distance limit for environmental measurements through remote unit SOLAR-02
- › AUTOSTART to run the tests automatically
- › WiFi connection to smartphones and tablets



SEE THE
TECHNICAL
DATA SHEET



AUTO TEST

INSULATION MAX **1000 V**

ORDER CODE **HV00PVCS**

PV CHECKS

MULTIFUNCTION INSTRUMENT FOR COMMISSIONING TESTS AND PERFORMANCE VERIFICATION

- › Insulation measurement up to 1000VDC
- › Open-circuit voltage measurement up to 1000V DC
- › Short-circuit current measurement up to 15A at 1000VDC
- › Continuity of protective conductors with 200mA
- › Polarity
- › AUTO SEQUENCE
- › Performance logging of PV strings



SEE THE TECHNICAL DATA SHEET



TOUCH-SCREEN SYSTEM

EFFICIENCY LOGGING

POWER QUALITY ANALYSIS

ORDER CODE **HV00300N**

SOLAR300N

MULTIFUNCTION INSTRUMENT FOR EFFICIENCY OF PHOTOVOLTAIC SYSTEMS LOGGING AND POWER QUALITY ANALYSIS

- › Verification and logging of the efficiency of the photovoltaic system
- › Synchronized measurement of environmental parameters through remote unit without distance limits
- › Simultaneous measurement of: voltages and currents on AC and DC side, solar radiation, temperature of photovoltaic panels
- › Mains analysis and energy consumption analysis



SEE THE TECHNICAL DATA SHEET



WIFI CONNECTION

I-V CURVE MAX

15A

AUTO TEST

MAX **1500 V**

ORDER CODE **HV000IVE**

SOLAR I-Ve

I-V CURVE TRACING OF PHOTOVOLTAIC MODULES AND STRINGS + EFFICIENCY OF THE PHOTOVOLTAIC SYSTEM

- › Measurement of inverter efficiency in single-string single-phase systems
- › I-V curve up to 1500V and 10A or up to 1000V and 15A
- › Power measurement of a module or a string
- › Open-circuit voltage (Voc) up to 1500V
- › Short-circuit current (Isc) up to 15A
- › Environmental and Cell temperature
- › No distance limit for environmental measurements through remote unit SOLAR-02
- › AUTOSTART to run the test automatically
- › WiFi connection to smartphones and tablets



SEE THE TECHNICAL DATA SHEET



CAT IV **300V** AC

CAT III **1000V** DC

ORDER CODE **HVMPP300**

MPP300

ACCESSORY FOR MEASURING AND RECORDING THE EFFICIENCY OF A SINGLE-PHASE AND THREE-PHASE MULTISTRING PHOTOVOLTAIC SYSTEM (UP TO 3 MPPT)

- › Simultaneous analysis of 3 strings
- › Compatible with SOLAR300N and SOLAR I-Ve
- › Integrated rechargeable battery
- › Practical hard anti-shock case
- › Small size (mm 300x265x140) for extreme portability



SEE THE TECHNICAL DATA SHEET



WIFI CONNECTION

I-V CURVE

15A

MAX
1000 V

ORDER CODE **HV00400W**

I-V400w

I-V CURVE TRACING ON PHOTOVOLTAIC MODULES AND STRINGS

- › I-V curve up to 1000V and 15A
- › Power measurement of a module or a string
- › Open-circuit voltage (Voc) up to 1000V
- › Short-circuit current (Isc) up to 15A
- › Solar radiation measurement
- › Environmental and Cell temperature
- › No distance limit for environmental measurements through remote unit SOLAR-02
- › AUTOSTART to run the test automatically
- › WiFi connection to smartphones and tablets



SEE THE TECHNICAL DATA SHEET



ORDER CODE **HA000065**

HT65

DIGITAL MULTIMETER TRMS

→ **TRMS**

MAX
1500 V

CAT IV 600V
AC



SEE THE TECHNICAL DATA SHEET



ORDER CODE **HP009025**

HT9025

AC/DC CLAMP METER WITH DATA LOGGER FUNCTION

→ **TRMS**
AC+DC

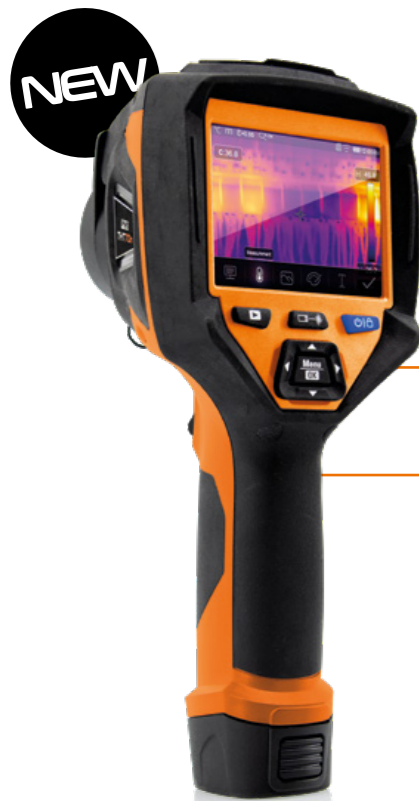


AUTO RANGE

MAX
1500 V



SEE THE TECHNICAL DATA SHEET



NEW



WIFI CONNECTION

BODY
TEMPERATURE SCREENING

384x288
PIXEL

RECHARGEABLE BATTERY

ORDER CODE **HN000070**

THT70

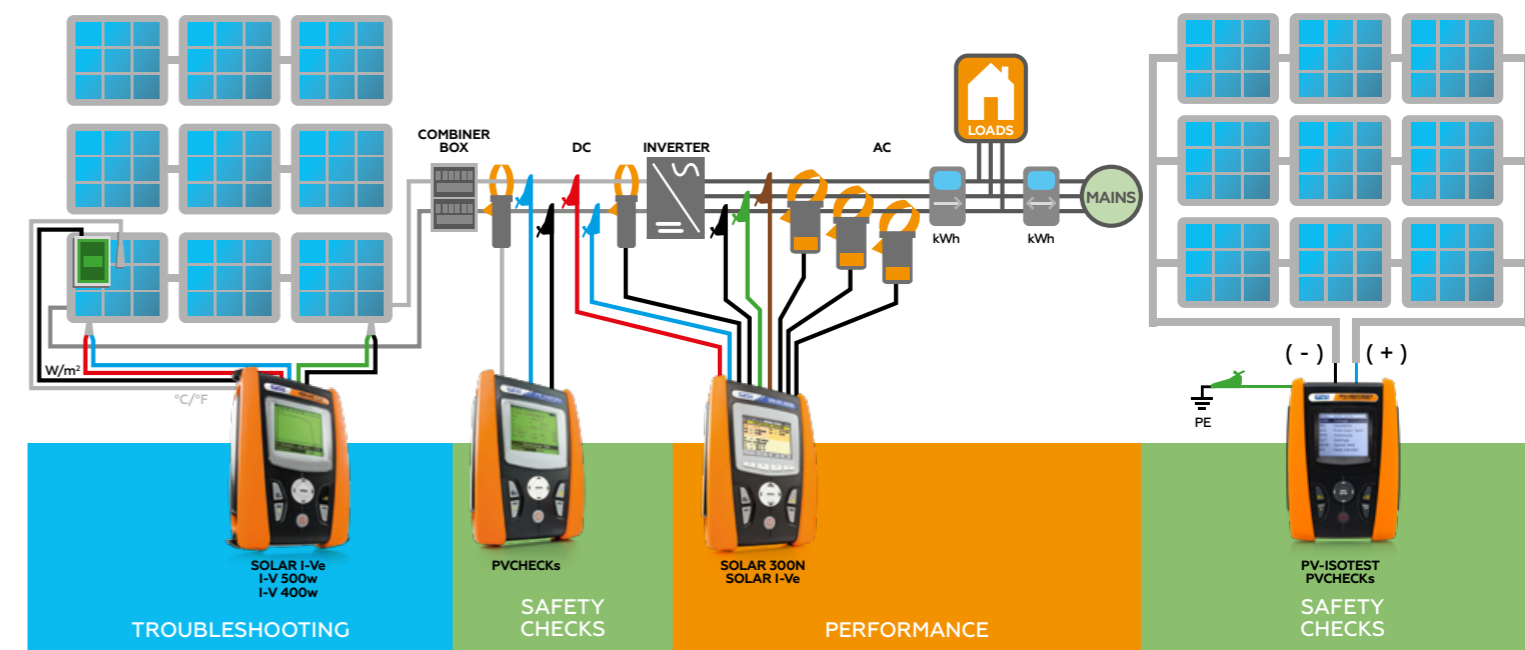
ADVANCED INFRARED THERMAL CAMERA WITH TOUCH SCREEN

- › UFPA IR sensor
- › Resolution: 384 x 288 pxl / 17µm
- › Thermal sensitivity: <0.05°C @ 30°C / 50mK
- › Visual range: lens 22mm
- › Image focusing: Manual on lens
- › Frequency: 50Hz
- › Colour palettes: 8 standard + 4 isotherm lines
- › Camera type: 5Mpxl, FOV 59°
- › Display: 3.5" TFT colour display with capacitive touch-screen, high brightness
- › IR, Visual, Fusion PiP, Auto Fusion
- › Digital zoom: 1x ÷ 32x
- › Video output: HDMI



SEE THE TECHNICAL DATA SHEET

Connection diagram





ACCESSORIES

	SOLAR I-Ve	I-V400w	I-V500w	SOLAR300N	PVCHECKs	PV-ISOTEST	MPP300
TOPVIEW2006 PC Windows software + USB/optical cable	S	S	S	-	S	S	-
TOPVIEW2007 PC Windows software + USB cable	-	-	-	S	-	-	-
PT300N Temperature probe	S	O	O	S	O	-	-
SOLAR-02 Remote unit	S	O	O	S	O	-	-
KITGSC4 Set of 4 cables + 4 alligator clips	S	S	S	-	S	S	-
KITPVMC3 Set of 2 adapters with MC3 connectors	S	S	S	-	-	-	-
KITPVMC4 Set of 2 adapters with MC4 connectors	S	S	S	-	-	-	-
KITPCMC3 Set of 2 adapters with MC3 connectors	-	-	-	-	S	O	-
KITPCMC4 Set of 2 adapters with MC4 connectors	-	-	-	-	S	S	-
KIT800 Set of 5 cables + 5 alligator clips	-	-	-	S	-	-	-
KITMPPACC Set of 4 alligator clips	-	-	-	-	-	-	S
KITMPPACW Set of 4 cables	-	-	-	-	-	-	S
KITMPPDCC Set of 2 alligator clips	-	-	-	-	-	-	Sx3
KITMPPDCW Set of 2 cables	-	-	-	-	-	-	Sx3
KITPVEXT25M Green and black 25m extensions	O	O	O	-	O	-	-
KITKELVIN Twin-cable set for AUTO SEQUENCE tests	O	O	O	-	-	-	-
606-IECN Connector with magnetic tip	O	O	O	O	O	O	O
A0055 Power supply	-	-	-	S	-	-	S
A0057 Power supply	-	-	-	O	-	-	O
PT400 Stylus	-	-	-	S	-	-	-
HT304N Reference cell	S	S	S	S	O	-	-
M304 Mechanical inclinometer	S	S	S	-	O	-	-
ACON3F4M Adapter	-	-	-	-	-	-	Sx3
HT4004 Standard 10-100A DC clamp, 30 mm	S	-	-	S	S	-	O
HT98U Standard 1000A DC clamp, 50 mm	O	-	-	O	O	-	O
HP30D1 Standard 1000A DC clamp, 83 mm	O	-	-	O	O	-	O
HT4005K Standard 200A AC clamp, 40 mm	S	-	-	Sx3	-	-	O
HT4005N Standard 5-100A AC clamp, 20 mm	O	-	-	O	-	-	O
HT96U Standard 1-100-1000A AC clamp, 54 mm	O	-	-	O	-	-	O
HT97U Standard 10-100-1000A AC clamp, 54 mm	O	-	-	O	-	-	O
HP30C2 Standard 200-2000A AC clamp, 70 mm	O	-	-	O	-	-	O
HP30C3 Standard 3000A AC clamp, 70 mm	O	-	-	O	-	-	O
HTFLEX33E Flexible 300-3000A AC clamp, 174 mm	-	-	-	O	-	-	O
HTFLEX35E Flexible 300-3000A AC clamp, 274 mm	-	-	-	O	-	-	O
BORSA2051 Soft carrying bag	-	-	-	-	S	-	S
VA500 Rigid carrying case	S	S	S	S	O	-	-
VA507 Rigid carrying case	-	-	-	-	O	S	-
SP-0400 Free hands kit	O	O	O	O	O	O	-
SP-0500 Free hands kit	O	O	O	O	O	O	-
CF800 Compact Flash Card	-	-	-	O	-	-	-
MCR800 USB compact flash card reader	-	-	-	O	-	-	-
YABAT0003HT1 Li-Ion 3,7V rechargeable battery	-	-	-	S	-	-	S

- : Not compatible | S: Standard | O: Optional



HT ITALIA S.R.L.

Via della Boaria, 40 48018 Faenza (RA) Italy

T +39 0546 621002 | F +39 0546 621144 | M export@htitalia.it | ht-instruments.com



Services d'EURO-INDEX

EURO-INDEX est un fabricant, importateur et distributeur de diverses marques A dans le domaine des instruments de test et de mesure. Nous fournissons également une large gamme de services pour optimiser l'utilisation de ces instruments dans vos activités. Ces services comprennent naturellement l'entretien, la réparation et l'étalonnage des instruments, mais nous proposons aussi une assistance sous forme de formation via notre EURO-INDEX Academy et la location d'instruments.

Centre de Service Agréé

EURO-INDEX est un Centre de Service Agréé pour toutes les marques représentées. Cela signifie que vos instruments sont pris en charge par des techniciens formés par le fabricant et disposant des outils et logiciels adéquats. Seules des pièces d'origine sont utilisées et la garantie de votre instrument, ainsi que les certifications (ATEX, EN50379, etc.) restent intactes.

Laboratoire de maintenance et de calibrage

Le laboratoire des Pays-Bas est accrédité RvA selon la norme EN-ISO/IEC 17025. Cette accréditation est valable pour différentes grandeurs, telles que spécifiées dans le champ d'application associé au numéro d'accréditation K105. Les certificats de calibrage RvA sont acceptés à l'international et équivalents à ceux de BELAC.



Service Mobile

Outre les laboratoires d'étalonnage fixes de Zaventem et de Capelle aan den IJssel, nous disposons également d'un laboratoire itinérant appelé "Service mobile". Nos services peuvent venir vers vous, en offrant une qualité équivalente.

MQS®

MQS® est une formule d'entretien exclusive comportant un entretien et un calibrage périodiques de vos instruments de mesure à un coût fixe et faible. Via un portail Web gratuit (monmq.be), vous avez toujours accès à vos certificats de calibrage.

Location d'instruments de mesure

- Vaste assortiment
- Précision démontrable par le certificat d'étalonnage actuel
- Conseils avisés
- Les instruments sont livrés avec leurs accessoires

EURO-INDEX Academy

- Formations et séminaires
- Vidéos de démonstration et d'instruction
- Notes d'application



Comptoir de service



Entretien, réparation et calibrage



Formations et séminaires



Service Mobile

Sous réserve de modifications EURO-INDEX® FR 23001



BELGIQUE
Chaussée de Louvain 607
1930 Zaventem
T: 02 - 757 92 44
F: 02 - 757 92 64
sales@euro-index.be
www.euro-index.be

PAYS-BAS
Rivium 2e straat 12
2909 LG Capelle a/d IJssel
T: +31 - (0)10 - 2 888 000
F: +31 - (0)10 - 2 888 010
verkoop@euro-index.nl
www.euro-index.nl

